

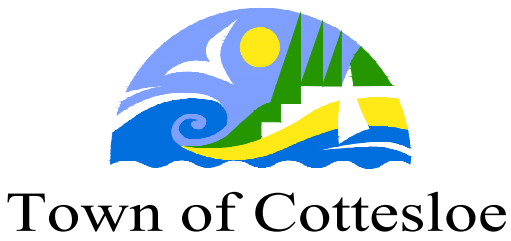
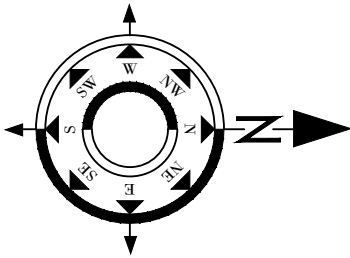


STAGE 2 - SECTION A
NAPIER STREET TO NORTH COTTESLOE
SURF LIFE SAVING CLUB (PAGE 02)

STAGE 2 - SECTION B
NORTH COTTESLOE SURF LIFE SAVING CLUB
TO NORTH STREET (PAGE 03)

THIS DRAWING REMAINS THE PROPERTY OF THE TOWN OF COTTESLOE AND MUST NOT BE COPIED, RETAINED OR USED WITHOUT THE AUTHORITY OF THE DIRECTOR ENGINEERING SERVICES

REV	DESCRIPTION	DESIGNED	APPROVED	DATE
0	ISSUED FOR INFORMATION	R.I	--	03/12/24
1	ISSUED FOR INFORMATION	T.M	R.I	07/01/25
2	ISSUED FOR IPUBLIC CONSULTATION	T.M	R.I	03/06/25
3				
4				



TOWN OF COTTESLOE
109 BROOME STREET
PO BOX 606
COTTESLOE WA 6011

TEL (08) 9285 5000
FAX (08) 9285 5001

www.cottesloe.wa.gov.au

INITIALS	DATE	SIGNATURE
DESIGNED: TOC	03/12/24	
CHECKED: TOC	03/12/24	
APPROVED: TOC	03/12/24	

TITLE:	MARINE PARADE STAGE 2 - NAPIER STREET TO NORTH STREET SHARED PATH - DRAFT CONCEPT PAGE 01 OF 03	REV 2 SCALE 1:500
DRAWING NUMBER:	25-003-01	A1

LEGEND

PROPOSED SHARED PATH WIDENING
ALONG EXISTING PATH ALIGNMENT

PARKING BAYS TO BE REMOVED

NEW PARKING BAYS

OPTIONS TO BE DETERMINED
AFTER CONSULTATION

BEACH ACCESS PATH

CT19

DIAGRAM 1: NAPIER STREET TO EILEEN STREET

CT16

MARINE PDE

NAPIER

EILEEN ST

MATCH LINE A-A JOINS BELOW

DIAGRAM 2: EILEEN STREET TO NORTH COTTESLOE
SURF LIFE SAVING CLUB

CT14

CT13

Refer to Shared Zone Options
(DRG NO. 25-005-03)

NORTH COTTESLOE SURF
LIFE SAVING CLUB

PROPOSED
CROSSING
LOCATION

EILEEN ST

ERIC ST

MATCH LINE A-A JOINS ABOVE

MATCH LINE B-B JOINS DRG NO. 25-003-03

STAGE 2 - SECTION A: NAPIER STREET TO NORTH COTTESLOE SURF LIFE SAVING CLUB AFTER ERIC STREET

REV	DESCRIPTION	DESIGNED	APPROVED	DATE
0	ISSUED FOR INFORMATION	R.I	--	03/12/24
1	ISSUED FOR INFORMATION	T.M	R.I	07/01/25
2	ISSUED FOR IPUBLIC CONSULTATION	T.M	R.I	03/06/25
3				
4				

TOWN OF COTTESLOE
109 BROOME STREET
PO BOX 606
COTTESLOE WA 6011

TEL (08) 9285 5000
FAX (08) 9285 5001

www.cottesloe.wa.gov.au

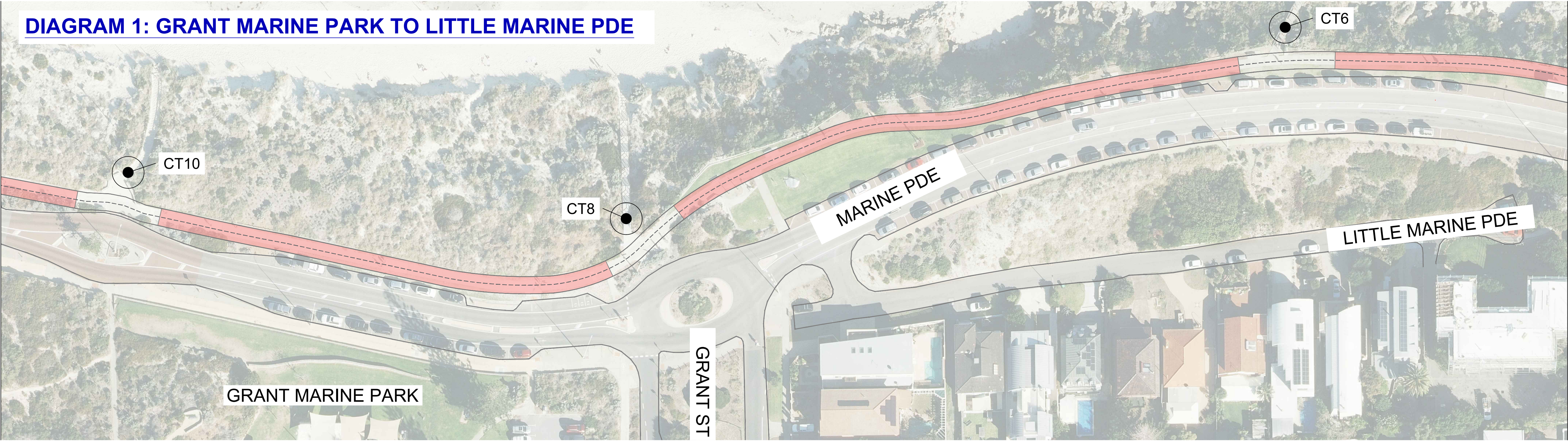
INITIALS	DATE	SIGNATURE
DESIGNED: TOC	03/12/24	
CHECKED: TOC	03/12/24	
APPROVED: TOC	03/12/24	

TITLE:	MARINE PARADE STAGE 2 - NAPIER STREET TO NORTH STREET SHARED PATH - DRAFT CONCEPT PAGE 02 of 03
DRAWING NUMBER:	25-003-02

REV	2
SCALE	1:500
	A1

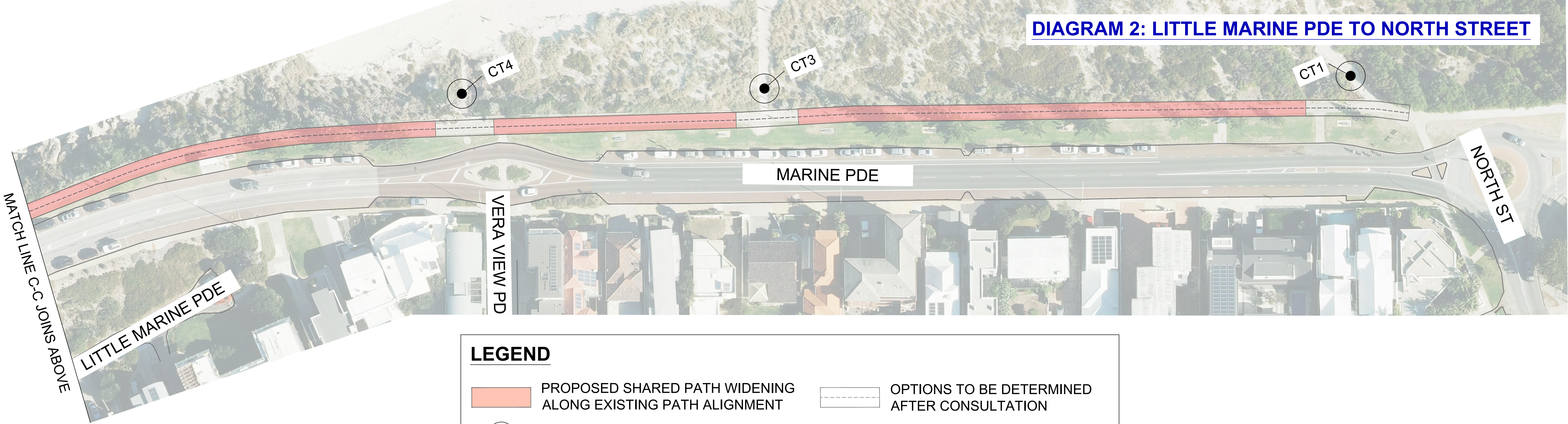
MATCH LINE B-B JOINS DRG NO. 25-003-02

DIAGRAM 1: GRANT MARINE PARK TO LITTLE MARINE PDE



MATCH LINE C-C JOINS BELOW

DIAGRAM 2: LITTLE MARINE PDE TO NORTH STREET



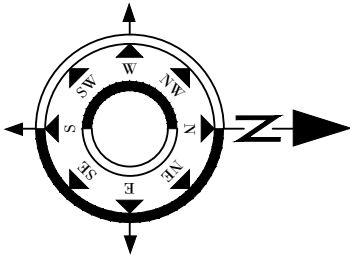
LEGEND

- PROPOSED SHARED PATH WIDENING ALONG EXISTING PATH ALIGNMENT
- OPTIONS TO BE DETERMINED AFTER CONSULTATION
- BEACH ACCESS PATH

STAGE 2 - SECTION B: GRANT MARINE PARK TO NORTH STREET

THIS DRAWING REMAINS THE PROPERTY OF THE TOWN OF COTTESLOE AND MUST NOT BE COPIED, RETAINED OR USED WITHOUT THE AUTHORITY OF THE DIRECTOR ENGINEERING SERVICES

REV	DESCRIPTION	DESIGNED	APPROVED	DATE
0	ISSUED FOR INFORMATION	R.I	--	03/12/24
1	ISSUED FOR INFORMATION	T.M	R.I	07/01/25
2	ISSUED FOR IPUBLIC CONSULTATION	T.M	R.I	03/06/25
3				
4				



TOWN OF COTTESLOE
109 BROOME STREET
PO BOX 606
COTTESLOE WA 6011

TEL (08) 9285 5000
FAX (08) 9285 5001

www.cottesloe.wa.gov.au

INITIALS	DATE	SIGNATURE
DESIGNED: TOC	03/12/24	
CHECKED: TOC	03/12/24	
APPROVED: TOC	03/12/24	

TITLE:	MARINE PARADE STAGE 2 - NAPIER STREET TO NORTH STREET SHARED PATH - DRAFT CONCEPT PAGE 03 of 03
DRAWING NUMBER:	25-003-03

REV	2
SCALE	1:500
	A1